

## **Cristina Arcenegui Bono**

### **SH10-001 - iPad for Quilters - Procreate**

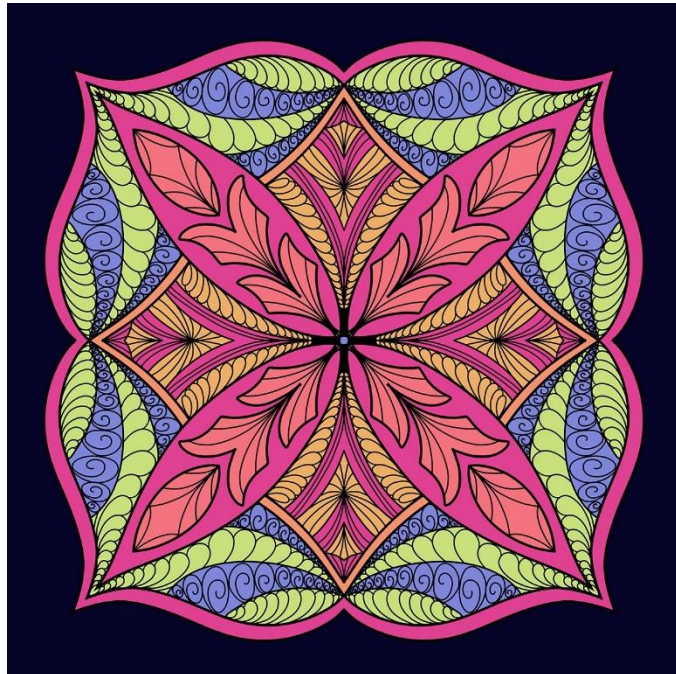
6-Hour Workshop - \$85.00

12 pm - 6 pm EST, Wednesday, January 22

Whether you've already rocked my "iPad for Quilters" workshop or you're just itching to dive into the digital design world with Procreate, this online workshop is next creative playground. Forget about needing mad drawing skills – Procreate's got your back. This workshop is all about taking your quilting game up a notch, sharpening your free motion skills, doodling like a pro, and designing patterns. Returning students, get ready to level up your quilting mojo with some advanced digital design tricks. Newbies, prepare to have your mind blown as you discover a whole new way to bring your quilting dreams to life with magic Procreate. **All Levels**

#### **Students to Provide**

- iPad
- iPad stylus
- The app Procreate



## Cristina Arcenegui Bono

### SH10-002 - Quilting with Friends: Create Your Own Winnie the Pooh Quilt

6-Hour Workshop - \$85.00

12 pm - 6 pm EST, Friday, January 24

Join Cristina for a fun workshop where creativity meets nostalgia as we embark on a delightful journey to create a charming small quilt featuring everyone's favorite bear, Winnie the Pooh, and his endearing friends! This hands-on workshop is perfect for quilters of all skill levels, from beginners to seasoned pros, who are looking to explore the art of machine quilting and fabric coloring. Using fabric markers, you'll learn how to add color to your quilt, bringing Winnie the Pooh and his friends to life in a unique and personal way. **All Levels**

#### Students to Provide

- Sewing supplies: thread snippers, fabric scissors, paper scissors, pins
- Top fabric: 35" x 25 (muslim or off White solid fabric)
- Backing fabric: 38" x 28" (muslim or off White solid fabric)
- Batting (my favorite is Hobbs 80/20): 2 pieces of 38" x 28"
- Black, and lemon green machine quilting thread preferably 40 or 50 weight (I use Madeira Polyneon, Aurifil and Glide Tech)
- basting thread
- Frixion pen
- Notebook, mechanical pencil, pen.
- Assorted fabric markers (my favorites are Tulip fabric markers and Tsukineko fabric markers), assorted regular pencils (my favorites are Prismacolor), and Fabric medium.
- Light box (only if you have one)
- Domestic sewing machine with darning foot

#### Sewing Machine Required



## **Mel Beach**

### **SH10-003 - Warning! Modern, Improv Curves Ahead!**

6-Hour Workshop - \$95.00

12 pm - 6 pm EST, Thursday, January 23

Buckle up for a new take on modern, improv curves! We'll experiment and play with topstitch applique curves that are Finished, Freeing, Forgiving, and FUN! Once you see how quick and easy it is to create these improvisational curves, we'll add a modern, curvy twist to traditional quilt designs including borders, Pinwheels, Chinese Coins, Log Cabins, and Drunkard's Path blocks.

#### **All Levels**

#### **Students to Provide**

6+ fat quarters (18" x 22") will provide options for trying each technique by making a few blocks/units. You have the option to bring additional yardage to create a larger quilt. One of the techniques involves 10" squares so you are welcome to bring 8 or more 10" squares if you have them on hand, but you will still need 4-5 fat quarters for the other techniques.

Elmer's White School Glue (I cannot guarantee same results with other glue brands/styles)

Sewing machine in good working order equipped with a 80/12 or 90/14 topstitch needle, open toe applique foot or quarter inch piecing foot.

50wt thread(s) that coordinates or contrasts with your fabrics

Rotary cutting equipment:

45mm or 60 mm rotary cutter with a NEW sharp blade installed as we'll be cutting through multiple layers (treat yourself to a new blade as this will be SEW much easier)

18" x 24" or bigger cutting mat

Rotary rulers: 6" square, 12" square, and 6" x 24"

Fabric Scissors

Iron/pressing surface

Blue painter's tape/washi

Optional: Design wall

**Sewing Machine Required**

## Mel Beach

### SH10-004 - Exploring Evolon in Your Fiber Art

6-Hour Workshop - \$95.00

12 pm - 6 pm EST, Saturday, January 25

Spend a day playing with Evolon, a super soft, yet strong non-woven fiber that has many art quilt applications. We'll experiment with a variety of techniques to transform Evolon through layers of faux-dyeing, sun printing, mark making, painting, stamping, stenciling, raw-edge applique, and stitching! You'll leave with lots of swatches, ideas and inspiration to incorporate Evolon into your fiber art!

#### All Levels

#### Students to Provide

\*Evolon Non Woven Fiber—you can order sampler packs of Evolon Non-Woven fiber for use during class from these US based companies. Please note that this is the minimum for use with workshop play, although you may want to order extra to continue the fiber fun beyond class.

<https://www.talasonline.com/Evolon-CR-Non-Woven-Textile> - please order at least 2 of the 15.7" x 15.7" sheets and sub cut into 18 squares measuring approximately 5.25"

<https://www.equilter.com/product/306236/evolon-nonwoven-sample-pack-85-x-11> order one sample pack of 8.5" x 11" and sub cut 4-5 of the sheets into quadrants measuring 4.25" x 5.5".

\*Paints: please note that you will need at least one jar/bottle from each bulleted category listed below as they have very different properties/results/uses:

- One or more 2.25oz jars of liquid acrylic fabric paint such as Jacquard's Dye-Na-Flow or ProChem ProSilk & Fabric paint
- One or more 2oz bottles of acrylic craft paints. Mel's favorites are DecoArt Dazzling Metallics, DecoArt Extreme Sheen, and Folk Art Color Shift Paints which have a pearlescent/metallic sheen. Other options are Apple Barrel, Dick Blick, DecoArt, and Folk Art matte or gloss finish. These are readily available at most craft supply stores.

\*One or more dark-colored ink pads. Recommended brands include: Tsukineko VersaFine Claire (Nocturne or Medieval Blue); Tsukineko Memento Luxe (Tuxedo Black or Nautical Blue); and/or Ranger Archival Ink Jet Black.

\*Work station set up: Plastic table cloth/garbage bag to protect your work surface

- Paper towels/old rags/baby wipes to clean up paint/messes
- Access to water (small pint-sized yogurt containers work well to have water at your work station and refill as needed)
- A flat surface for your fabrics to dry (indoors or outdoors)
- 10+ gallon-sized Ziploc bags
- Permanent marker



- 1-2 pairs of latex or nitrile gloves
- Iron/ironing board (for use in the second half of class)
- 7" x 18" or bigger piece of parchment paper to protect your iron/surface
- A 12" square rotary ruler works well for transporting your painted samples to your drying area
- Small flat rocks/marbles to keep samples from blowing away if placing outside
- Wearing an apron/smock is highly recommended to protect your clothing from paint drops/splashes

\*Paint Mixing & Mark Making Supplies:

- 3-4 plastic spoons for mixing (with option to use a 10ml syringe)
  - 2 or more 6" squares of freezer paper
  - One adhesive foam sheet (sticker-backed craft foam readily sold in the kids section of most art supply store. You are welcome to supplement with sticker backed foam shapes: stars, hearts, circles, squares, etc. Avoid any glitter/textured foam.
  - 1-2 small round brushes for use with acrylic paint
- 
- 1-2 cardboard boxes from your recycling bin and/or old cds
  - 2-3 foam dauber and/or make up wedge
  - 10 small plastic cups (4oz or bigger)
  - 1-2 6" paper plates to use as a paint palette

\*One or more items for use with sun (or sunless) printing. Objects need to be non-porous (plastic, metal, glass), lay flat, and have holes. Recommended items include: small pressed vinyl coasters/placemats; vinyl sink/bathtub mats, needlepoint plastic canvas sheet/shapes; flat glass marbles/rocks, keys, reusable paper plate holders.

\*Household items for use with mark making (start saving now to have a few options on hand): assorted small bottle lids (ie. soda, medication bottles, etc), Lego bricks, toilet paper tubes, bubble wrap, highlighter/pen/pencil, gift/hotel key card, plastic forks, chopsticks from takeout.

\*The items below are completely optional for layering more creative play into your evolon samples:

- Your favorite stamps (rubber, clear acrylic, foam, and/or hand-carved stamps)
- Your favorite stencils (6" or 9")

\*Optional materials for applique/stitching towards the end of class:

- 2 or more 6" squares of Pellon 805 Wonder Under (or your favorite fusible web)
- 8" square of batting
- sewing machine equipped with open toe applique foot or darning foot) and assorted threads
- hand embroidery threads/needle

\*Feel free to contact Mel with any questions you may have about any of the listed supplies:

<https://melbeachquilts.com/contact-1>



## Patricia Belyea

### SH10-005 - Dancing Xs Quilt

6-Hour Workshop - \$105.00

12 pm - 6 pm EST, Friday, January 24

The Dancing X Quilt is a perfect introduction to Patricia Belyea's Inserted Curves technique. In this workshop you learn how to insert two curved lines into a 12" square of fabric. Your curves are of your own design and are perfectly flat! To make the quilt, you sew 6 blocks of one color combination and 6 blocks of another color combination for a checkerboard composition. Final size is 33" x 44".

**All Levels**

#### Students to Provide

#### **Sewing Tools & Supplies:**

Sewing machine and gear—such as thread, ripper etc.

Fine pins (highly recommend Clover Fine Patchwork Pins #2507)

Good fabric scissors, paper scissors

Cutting tools—24" or larger cutting mat, 24" grid ruler, rotary cutter

Pencil; eraser; Prismacolor Premier colored pencils or fabric marking pens

Freezer paper

Iron and ironing board

#### **Fabrics:**

Two background fabrics, with large motifs that play well together — 1 yard each

Two contemporary solids that contrast and complement the background fabrics — 3/4 yard each

**Sewing Machine Required**



## Carol W. Clanton

### SH10-006 - Fluttering Florals

3-Hour Workshop - \$65.00

12 pm - 3 pm EST, Wednesday, January 22

\$65.00 workshop fee includes the \$10 Class Kit

In this workshop, choose a diamond or circular design to create your own butterfly garden. There are no small appliques to stitch down. Instead, groups of flowers, butterflies and other motifs are cut from a printed fabric. Using the motif outline as a guide, the motifs are sewn onto a background using a simple hand stitch. This is the perfect workshop to introduce you to the Broderie Perse applique technique. **All Hand Sewing.**

#### All Levels



**Class Kit** includes workshop pattern and worksheet (will be sent digitally). The \$10 class kit is included in the workshop fee.

#### Students to Provide

**BEFORE CLASS** - Cut out a 13 ½” square for your background fabric.

#### SUPPLY LIST

**FABRIC**- ½ yard of 100% cotton fabric for motifs and a 13 ½” square for background.

The size of the block will be 12 ½” when it is squared up. The 13 ½” block allows for shrinkage when hand sewing.

Choose a favorite floral pattern. It can be printed with individual and/or groups of flowers. The flowers should be between 1 ½” to 3” in diameter. Several different fabrics can be used. In the sample blocks I used a floral print and another piece of butterfly fabric. The flowers are about 2 ½” in diameter.

Strive to have your background close in color to the background of your motif fabric. However, if that is not possible, the motif background will create another dimension to your design.

**NEEDLE**- Sharp or Milliner size 10 to 12. My favorite is size 11. If you have an applique needle that you prefer that is fine.

**THREAD**-Cotton or cotton covered polyester to blend with your motifs and/or background. Size 50 or 60 is good. Aurifil has a size 80 especially for applique.

**OTHER SUPPLIES**-applique pins, washable fabric glue stick (Elmer’s) or glue (like Roxanne), toothpick, fabric marker, thimble (if you use one), small ruler, good lighting, a light box (optional) an iron and ironing board standing by, and any other supplies that will make you happy.

## Carol W. Clanton

### SH10-007 - 3-D Baltimore Applique Techniques Revisited

3-Hour Workshop - \$65.00

12 pm - 3 pm EST, Friday, January 24

\$65.00 workshop fee includes the \$10 Class Kit

Have you always wanted to create those 3-D Baltimore effects we find in Baltimore Style Applique Quilts? This is a fun introductory class where you will learn several of those techniques and how to incorporate them into this 12” block. This workshop covers mainly the 3-D techniques. As time allows, Carol will cover the needleturn technique that you use to stitch down the appliques. **All Hand Sewing**

#### All Levels

**Class Kit** includes workshop Pattern and worksheet (will be sent digitally). The \$10 class kit is included in the workshop fee.

#### Students to Provide

##### BEFORE CLASS cut the following:

- 13 ½” square of background fabric
- Strip of fabric 1 ¼” x width of fabric for construction of Ruched Rose
- Strip of fabric 1 ¼” x 10” for construction of Center of Ruched Rose

Fabric: Lighter weight 100% cotton fabric works best for the Ruched Rose construction. Choose various shades of green for leaves and buds, various colors of your choice for the other flowers – no bigger than half of a fat quarter needed, except for construction of the Ruched Rose (see above). Thread: Hand Quilting Weight Thread for Ruched Rose construction. **NO RAYON THREAD!** 50 wt. thread for actual applique to match the fabric colors. Needles: Your favorite needle to use with the quilting thread for the Ruched Rose.

For the actual applique, a slim needle size 10 to 12 in a sharp or milliner needle is good.

Other Supplies: Small ruler (no bigger than 12 inches). applique pins, embroidery scissors, small paper scissors, fabric marker/pencil of your choice for tracing pattern and marking fabric, freezer paper, 3 binding clips, light box (optional), any other sewing supplies that make you happy!





## Phyllis Cullen

### SH10-008 Impressionist Landscape Collage-Including Pattern Making

6-Hour Workshop - \$105.00

12 pm - 6 pm EST, Wednesday, January 22

Use one of my landscape patterns or create your own following my instructions in class to create a beautiful collage that will look like a painting. It's as easy as chopping up fabric and filling a coloring book and you'll learn the basic principles of landscape painting as well! No measuring, fussy cutting, drawing, matching or math- just fun. You'll learn my easy quilting patterns too!

#### All Levels

#### Students to Provide

Lots of scraps, prints, blenders, batiks, etc in a range of values. Lots of blues for the sky and water, greens and browns etc.; everything you have.

line drawing (you can request one of mine: Hawaiian palm cove, Okanagan falls, or the Lighthouse) or create your own. You will be emailed your choice of pattern and will need to enlarge to 18" wide  
Steam a seam 2, 18" wide by 3/4 yard

Sharpie, black

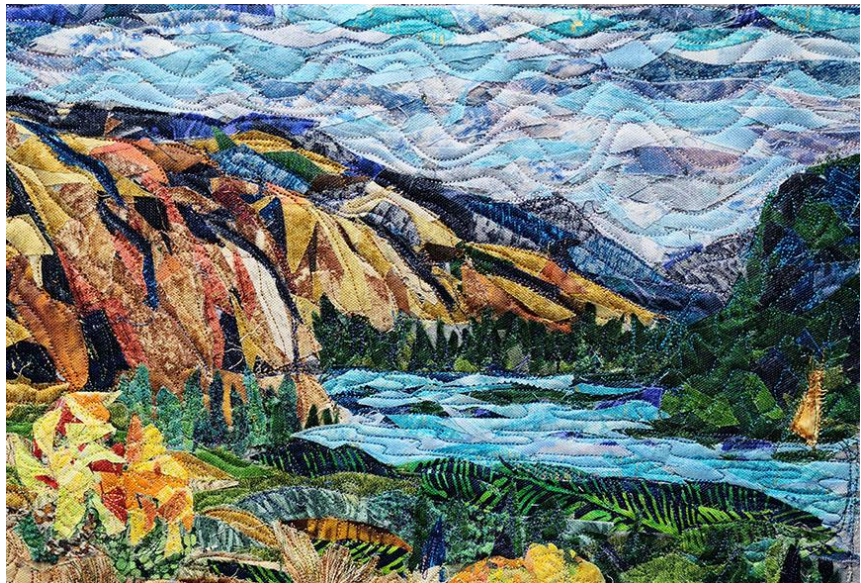
Rotary cutter and mat

Glue stick

Dark tulle - black or navy or forest green for example; larger than your pattern

You will receive a reference photo, full handout, and line drawing by email.

#### Sewing Machine Optional



## Phyllis Cullen

### SH10-009 Hidden Figures

6-Hour Workshop - \$105.00

12 pm - 6 pm EST, Thursday, January 23

Come closer. Who do you see? We'll place figures that used to live in these dwellings, or hunted on these plains, or are just hiding within the flowers of an intricately designed fabric. The figures are printed onto a material that will wash away after we quilt along the lines. Then a little bit of acrylic pen highlighting and the figures will be there when you really look. I'll provide the figures for you to print or trace!

#### All Levels

#### Students to Provide

Package of "Rinse Away" by Wonderfil

Printer or pen to trace

Fat quarter of fabric that looks like like native dwellings, or a piece of fabric with lots of continuous design like Kaffe Fassett (see samples)

Scraps of coordinating or contrasting pictorial fabric that coordinate with the image. Bring scraps and we'll decide in class

Fusible web for scraps (nothing very big)

Batting and backing - size of top

Black thread

Posca pens. white and a color that's prominent in your fabric

Sewing machine with free motion setup

Sharp sewing machine needle

The figures can also be embroidered by hand

Handout and set of patterned figures to choose from will be provided by email

#### Sewing Machine Required





## Candy Grisham

### SH10-010 Dancing Dresdens

6-Hour Workshop - \$75.00

10 am - 4 pm EST, Thursday, January 23

Learn how to make Dresden Plates the easy way with lots of tips and tricks. The plates are then appliqued to a background in a fun, fanciful manner. The quilt could be a baby, large lap, or enlarged for a twin. A special border is included. These aren't your Grandmother's Dresdens though We will explore ways to do different edge treatments, piecing, and borders. This is a fantastic quilt for dense background negative space quilting or something simple. Your choice of fabric will make it yours and dictate the feel or season. 44 x 56" **All Levels**

#### Students to Provide

Sewing machine in great working order with 1/4" foot

Basic sewing supplies: neutral thread, pins, ripper, scissors, marking tool

Purple thing or point turner – I like the bone point turner

*Dresden Quilt Blocks Reimagined* book suggested

18° wedge ruler (Creative grid or other) 3 1/2" circle template

1/4 yard Pellon 906F or other lightweight interfacing (one sided fusible)

Rotary cutter, mat

Cardboard or cardstock rectangle

Freezer paper – 18"

Pressing ham is helpful – {see icandyfiberart Etsy shop} to help press seams open

Design wall is optional but helpful

Supplies may be view here: <https://www.youtube.com/watch?v=cb53LpmG0zo>

The 18° wedge ruler (Creative grid or other) can be purchased by Candy by visiting this link:

[18 Degree Dresden Wedge Ruler](#)

#### Fabrics:

Background 2 yards

Plates: 3-6 fabrics 1/3 yard x WOF each. A fat quarter bundle also works well.

1/4 yard for centers

(Backing 2 yards )

Precutting: Plates

- Assuming you are using the same fabric in a plate
- Cut 2 strips 8 1/2 x 22" - 2 different fabrics (or if using a single fabric cut a 8 1/2" x WOF)
- Cut 4 strips 6" x 22"- 4 different fabrics (or if using a single fabric cut 2 – 6" x WOF)

Cut 36 x 48" for center from background fabric

- 3 – 1 1/2" strips x WOF background Sub cut into 6-10" strips
- 5 – 3 1/2" strips WOF background for outer borders
- Prints: 2 strips 1 1/2" Sub cut into 14 – 1 1/2" x 6"
- Outer border: Cut 5 – 3 1/2" strips background

#### Sewing Machine Required



## Candy Grisham

### SH10-011 Reimagined Modern Dresdens

6-hour Workshop - \$75.00

10 am - 4 pm EST, Friday, January 24

Learn multiple ways to create interesting, unique Dresden plates with different edge treatments, piecing and fabric use. These are not your Grandmother's Dresden plates. Using a 18 degree wedge ruler and fabric of your choice we will learn 3-5 edge treatments and piecing options. There will also be discussion about layout, background and placement techniques.

#### All Levels



#### Students to Provide

18-degree wedge ruler (creative grid, Nancy's notions, Joann's)

3 1/2" circle template

Sewing machine in great working order with 1/4" foot

Basic sewing supplies: neutral thread, pins, ripper, scissors, marking tool

Purple thing or point turner – I like the bone point turner

*Dresden Quilt Blocks Reimagined* book suggested but optional

Rotary cutter, mat

Pellon fusible lightweight interfacing - 18" piece

Cardboard or cardstock rectangle

Freezer paper – 18"

Pressing ham is helpful – (see icandyfiberart Etsy shop) to help press seams open

Design wall is optional but helpful

The 18° wedge ruler (Creative grid or other) can be purchased by Candy by visiting this link:

[18 Degree Dresden Wedge Ruler](#)

---

Fabric: 6-8 1/2 yard pieces or fat quarters More is fine.

1-2 10" for centers

Scraps work, fat quarter bundles work, prints with large motifs for centers work

Precutting: If desired cut the fabric into 6 x 22" strips (8)

Preview general supply list here: <https://www.youtube.com/watch?v=cb53LpmG0zo>

**Sewing Machine Required**



## Gina Levesque

### SH10-012 Shibori (Two Day Workshop)

6-Hour Workshop (each day) - \$160.00

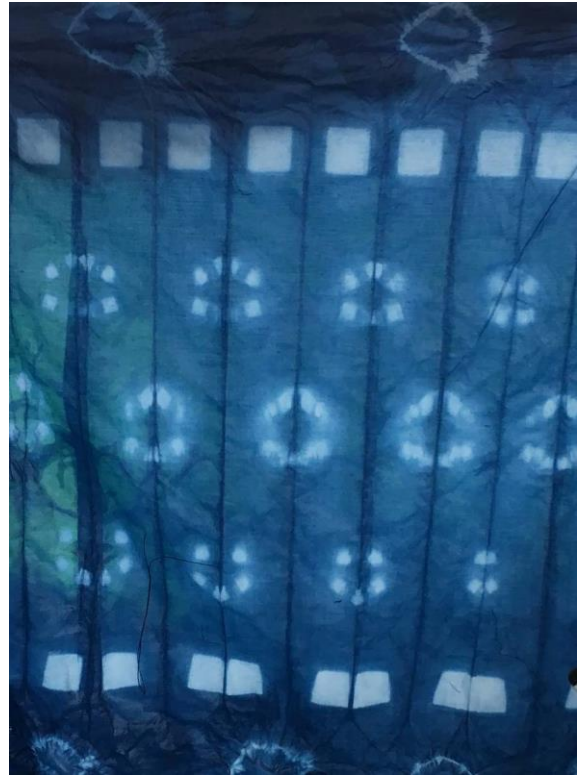
12 pm - 6 pm EST, Thursday & Friday, January 23-24

Shibori is a surface design technique where fabric is stitched, folded, clamped, or twisted to resist the dye bath. Once dyed these areas reflect various natural elements such as “storms”, “dentition”, “skeletons”, “wood grain”, “tortoise shells”, or even flowers. Stitches can also be used to outline a design which will show on the dyed fabric as a negative image due to the resist. Japanese tradition is to use indigo as the dye bath. The instructor will demonstrate how to set-up an indigo dye vat and how to refresh it (day 2). (Any type of vat dye will work with these techniques.)

#### All Levels

#### Students to Provide

Students will need a small pair of scissors, a seam ripper, a pencil, a dye pan, and all materials provided in the optional workshop kit: hand needles, a spool of craft thread, strips (approximately 5” x 12”) of Kona ready to dye cotton (pre-printed with stitch illustrations), additional 12” x 12” pieces of Kona cotton, a fiber reactive dye, small clothes pins, garbanzo beans, small blocks matching in size, and clamps for sets of blocks.



#### OPTIONAL CLASS KIT for workshop #SH10-12, Shibori (Two Day Workshop) - \$35

**Please note: Kits will only be mailed within the continental United States.**

Kit includes hand needles, a spool of craft thread, strips (approximately 5” x 12”) of Kona ready to dye cotton (pre-printed with stitch illustrations), additional 12” x 12” pieces of Kona cotton, a fiber reactive dye, small clothes pins, garbanzo beans, small blocks matching in size, and clamps for sets of blocks.

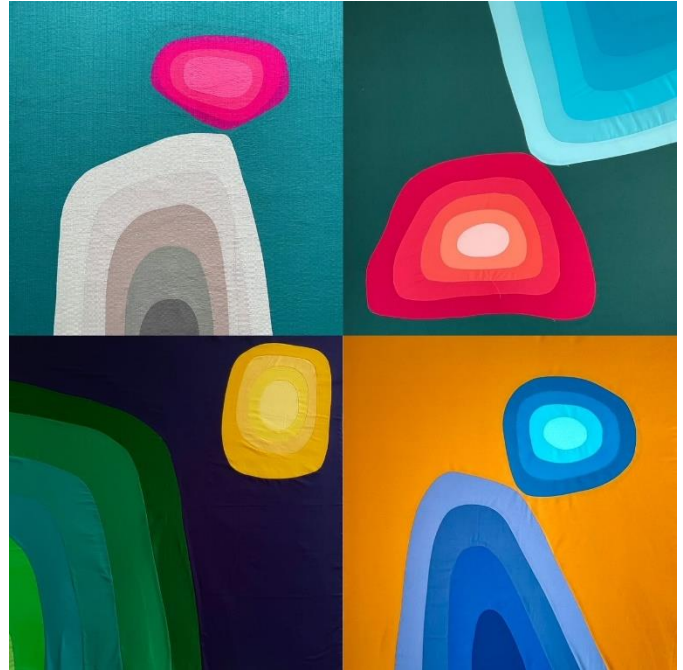
## Carolina Oneto

### SH10-013 Beautiful Stones

6-Hour Workshop - \$105.00

10 am - 4 pm EST, Thursday, January 23

In this comprehensive workshop, participants will design and craft a 30" x 30" quilt top, gaining expertise in piecing curves and concentric circles. Exploring various compositions, color combinations, and shapes, attendees will delve into the intricacies of fabric cutting and machine sewing for complex curved shapes. Through hands-on learning, they will acquire valuable skills for executing intricate designs, enabling them to elevate their quilting proficiency. This immersive experience promises to equip participants with the techniques and confidence to create visually stunning and precisely crafted quilt tops. **All Levels**



### Students to Provide

- basic sewing kit including sewing machine
- 35" x 35" piece of fabric (it will be your background)
- Hue A : Four different values, 1FQ per value
- Hue B : Four different values, 1FQ per value
- Small scissors with a sharp point
- Glue baste it, ROXANNE, temporary basting glue (with applicator) <https://a.co/d/8fZRMLu>
- Pins
- Fabric marker (erasable with water or chalk marker)
- Rotary cutter (IMPORTANT=> with a new blade)
- Quilting ruler
- Thread for sewing
- Notebook and pencil for taking notes

### EXAMPLES OF COLOR COMBINATIONS

OPTION 1: Hue 1 and Hue 2 are ANALOGOUS COLORS and the background is their COMPLEMENTARY

OPTION 2: Hue 1 and Hue 2 are COMPLEMENTARY COLORS and the background is A NEUTRAL

### Sewing Machine Required

## Carolina Oneto

### SH10-014 Waves and Shapes

6-Hour Workshop - \$105.00

10 am - 4 pm EST, Friday, January 24

In this workshop the attendees will design and make a mini quilt top (18" x 22") learning how to draw, cut and sew curves. During the class we will explore different designs, and how to use value and hue to create interesting compositions. The attendees will learn how to cut fabrics with complex shapes and how to sew these curved shapes by machine.

#### Confident Beginner Level

#### Students to Provide

- 18" x 22" piece of freezer paper (you can buy a roll of freezer paper or join 4 letter size sheets of freezer paper)
- Hue A : 6 different values, 1FQ per value
- Hue B : 6 different values, 1FQ per value
- paper scissors
- Pins
- Fabric marker (erasable)
- Rotary cutter (IMPORTANT=> with a new blade)
- Quilting ruler
- Quarter inch foot
- Thread for sewing
- Sewing machine
- Iron and ironing table
- Notebook and pencil for taking notes
- Starch

#### EXAMPLES OF COLOR COMBINATIONS

OPTION 1: Hue 1 and Hue 2 are ANALOGOUS COLORS

OPTION 2: Hue 1 and Hue 2 are COMPLEMENTARY COLORS

#### Sewing Machine Required



## Emma Jane Powell

### SH10-015 Modern Improv Piecing

3-Hour Workshop - \$55.00

10 am - 1 pm EST, Thursday, January 23

Improv is a great way to break free of traditional piecing rules and challenge your creativity. Skills taught will include: color & fabric combinations, straight lines, triangles, curves, and putting together segments. Use your scraps and create a small sample for each skill, or build up to a larger final project. You will finish this class with a toolbox full of techniques to create more expressive, spontaneous work in the future. **All Levels**

#### Students to Provide

Large and small fabric scraps needed! You may want to limit it to two complimentary colors, one contrasting color and a neutral. An orphan block or two.

Rotary cutter & mat (rotating mat is helpful).

Rotary rulers, large and small, and a square one is helpful. Recommended ruler sizes are 6"x24", 5"x8", and 6" square; however, it is encouraged to use what you have and not buy new supplies for the class.

Sewing machine and accessories.

#### Sewing Machine Required





## Emma Jane Powell

### SH10-016 Creative Free Motion Quilting – Ocean Theme

3-Hour Workshop - \$55.00

10 am - 1 pm EST, Saturday, January 25

Learn-ocean themed free motion quilting designs with the guidance of a seasoned instructor. Whether you are newish or a veteran free motion quilter, you will learn something new in this hands-on workshop. On a blank quilt sandwich, we will practice shells, waves, fish, boats, swirls, fillers, and more! Build confidence by having creative control over your quilting designs. Along with instruction and guidance from Emma, enjoy building camaraderie with your fellow quilters as you practice and perfect free motion quilting.\*It is recommended you have some experience with fmq basics. **Confident Beginner Level**

#### Students to Provide

Come to class with two 22" x 36" basted quilt sandwiches. Make these with muslin or a solid (or close to solid) color fabric, and batting of your choice. Spray basting is recommended for ease during the quilting process.

Have 40 weight cotton contrasting color thread, and your preferred quilting thread brand.

Guitermman, Aurifil, Superior are good quilting thread brands.

Have 3 to 5 bobbins wound with 50 weight cotton thread.

Quilting needles size 90/14.

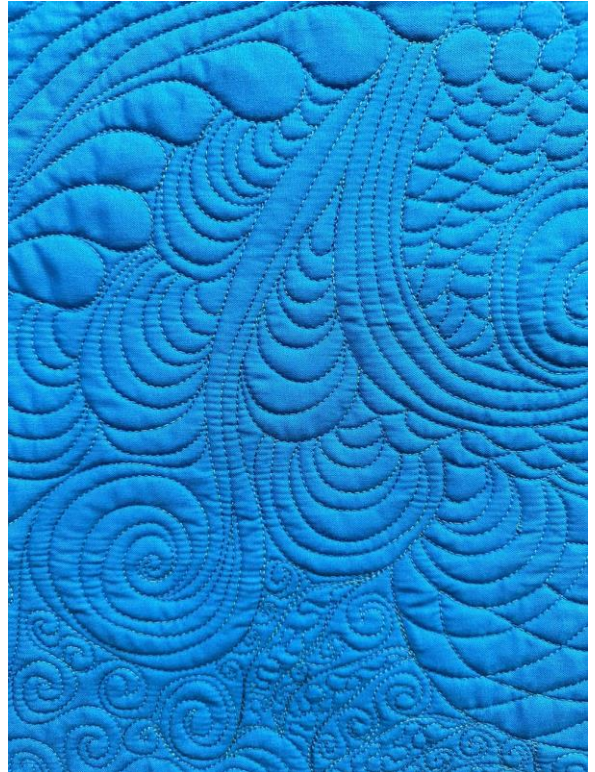
Have the appropriate free motion foot for your machine.

Choices are clear, open toe, or closed circle feet - all work just fine for learning and practicing in class.

Ensure that you are familiar with your machine, that your machine is in good working order and that you know how to lower the feed dogs.

Have a regular tip Sharpie to mark the grid on the quilt sandwich.

#### Sewing Machine Required



## Brenda Gael Smith

### SH10-017 Logs & Ladders: Building with Improvisation

3-Hour Workshop - \$60.00

4 pm - 7 pm EST, Wednesday, January 22

Convert your scraps into dynamic compositions with improvisational log cabin and ladder units.

Learn freeform cutting without rulers or templates; how to join irregular blocks; and the effective use of positive and negative space.

Explore the design principles of repetition and variation. Develop scrap management strategies for future projects.

#### All Levels

#### Students to Provide

**Fabric Selection:** This workshop is ideal for scrap-busting. If you are using scraps, ensure that you have a mix of square/rectangular pieces and longer, strippy pieces. This workshop is most suitable for fabrics that read as a single colour such as solids, hand-dyes, batiks, tone on tone prints and small-scale prints. If you are using prints, ensure that you have contrasting values.

#### General Workshop Requirements:

- Assorted fabric scraps in both light and dark colours or at least 6 fat quarters in solid colours (three darks and three lights)
- Rotary cutter with a sharp blade
- Cutting mat
- Chalk pencil
- Neutral-coloured thread for piecing
- Sewing machine in good working order with 1/4in foot
- Iron, ironing mat, extension cord
- Spray starch (optional)
- Digital camera or cameraphone

#### Sewing Machine Required



## Shereece Nicole

### SH10-018 Tied With a Bow

3-Hour Workshop - \$85.00

10am – 1pm EST, Wednesday, January 22

In this session we're going to create this gift inspired quilt top, which is great for holiday home decor. It can also be a great present for any holiday or birthday. Since we'll be using the sew (or stitch) and flip method, we'll go over how to utilize some of the extra fabric. Valentine's Day is just around the corner, so let's get started on this heartwarming gift.

#### All Levels

#### Students to Provide

- Pattern

- Fabric Already Cut
- Sewing Machine
- At least 6"x12" Quilting Ruler
- Rotary Cutter
- Cutting Mat
- Coordinating Thread and Pre-wound bobbins
- Fabric Marking Tool (Sewline, Frixxon, Ect)
- Iron and Ironing Station
- Pins
- Seam Ripper (just in case)

#### Sewing Machine Required





## Shereece Nicole

### SH10-019 Let's Mingle

3-Hour Workshop - \$85.00

10am – 1pm EST, Thursday, January 23

The Let's Mingle quilt was designed with the beginner or limited sewing time, more advanced quilter in mind! This quilt is perfect for featuring large prints or those with images ideal for fussy cutting. Learn or elevate your skills in creating this fun on point quilt with me.

#### All Levels

#### Students to Provide

- Pattern

- Fabric Already Cut
- Sewing Machine
- At least 6"x12" Quilting Ruler
- Rotary Cutter
- Cutting Mat
- Coordinating Thread and Pre-wound bobbins
- Fabric Marking Tool (Sewline, Frixxon, Ect)
- Iron and Ironing Station
- Pins
- Seam Ripper (just in case)

#### Sewing Machine Required





## Geraldine Wilkins

### SH10-020 Free Motion Spiral with a Twist

3-Hour Workshop - \$100.00

4 pm - 7 pm EST, Friday, January 24

#### **\$100.00 workshop fee includes the \$35 Class Kit**

Create a free-motion quilting plan for the Radiant Star quilt. This class includes essential skills for free-motion quilters to take their quilting to the next level. Learn how to take new and known designs

and apply them to a real quilt. You'll learn several continuous free-motion quilting spiral design variations. They are ideal for background filler and edge-to-edge designs.

#### **Confident Beginner - Intermediate - Advanced Level**

**Required Class Kit** includes Free motion quilting Spiral Pattern Booklet, Radiant Star Quilt pattern, Free motion quilting techniques & tips sheet. The \$35 class kit is included in the workshop fee.

**Please note: Kits will only be mailed within the continental United States.**

#### **Students to Provide**

##### **Required machine**

A sewing machine capable of free motion quilting

##### **Required Kit**

Free motion quilting Spiral Pattern Booklet

Radiant Star Quilt pattern

Free motion quilting techniques & tips sheet



#### **Required Supplies:**

Small notebook for class notes, tips, and techniques

White board with both a blank and ruled side <https://amzn.to/3MQJ3Gh>

Fine point Dry Erase marker

Clear 8 x 10 or 11 x 14 Plexiglass or Acrylic sheet available at Home Depot or Lowes or Amazon <https://amzn.to/4djyndQ>

Duct Tape - For the plexiglass

Customary free motion quilting tools - free motion quilting foot, quilting thread, gloves, top-stitch needles, and glider or slider.

#### **Required Preparation, Practice Quilt Sandwiches:**

Cotton fabric - Cut eight - 12-inch x 10-inch pieces of solid, medium to dark fabric

Cotton batting - Cut eight - 14-inch x 12-inch pieces of low/medium loft

Muslin for backing - Cut eight - 14-inch x 12-inch pieces

### **Radiant Star Quilt**

After class enrollment, which includes the class kit, make the Radiant Star quilt. In class we preview design placements and create a quilting plan

#### **Backing fabric:**

One low/medium loft cotton batting at least 40 x 40 inches

One backing fabric at least 40 x 40-inches

[Click here to download the workshop supply list.](#)

Geraldine Wilkins, Living Water Quilter Contact the instructor at [dena@livingwaterquilter.com](mailto:dena@livingwaterquilter.com)

**Sewing Machine Required**

## Geraldine Wilkins

### SH10-021 Peaceful Portrait

3-Hour Workshop - \$85.00

4 pm - 7 pm EST, Saturday, January 25

#### **\$85.00 workshop fee includes the \$20 Class Kit**

Discover the beauty of portraiture through the art of quilting in the Peaceful Portrait class. Students explore three distinctive stitching styles, decorative and free motion machine stitches and/or hand stitching. Express your creativity by stitching a small art piece depicting a tranquil resting face. Choose from a selection of captivating faces to transfer onto fabric, each offering its own story waiting to be stitched.

#### **All Levels**

**Required Class Kit** includes a selection of six original licensed Peaceful Portraits face designs Machine Quilting technique & tip sheet. The \$20 class kit is included in the workshop fee.

**Please note: Kits will only be mailed within the continental United States.**

#### **Students to Provide**

#### **Peaceful Portrait Required Kit**

Six - A selection of Peaceful Portraits face designs, Machine Quilting technique & tip sheet

#### **Peaceful Portrait Required Supplies**

The Peaceful Portraits were made with Connecting Threads' Mirage Tonals. Another option is the Faux Linen Tonals Gilded Age. If you pull from your fabric stash, use a blender fabric WITHOUT a print.

Mirage Tonals on the Connecting Threads website - <https://shrs.com/4ommu>

Faux Linen Tonals Gilded Age <https://amzn.to/3XQxdC8>

A sewing machine that can use a walking foot or has a dual feed feature

A sewing machine capable of free motion quilting and tools like gloves, a free motion foot and a Supreme Slider

Your favorite quilting thread. I like Glide 40wt, 60wt, Fantastico 40wt and Bottomline 60wt. Use thread that will be medium to high contrast to the fabric.

Two medium value fat quarters of Mirage Tonal, Faux Linen Tonal or similar fabric

Two 9 x 11 inch sheets of Decor Bond one-sided fusible stabilizer

Painter's tape

Cotton batting

1/2 yard backing fabric



5/8 yard black fabric for facing and/or binding  
Portable Light Pad OR use painters tape and a window to trace design.  
Find light pad on Amazon <https://amzn.to/3TzO61s>  
A removable fine point marking tool. Heat or water removable.  
Self-threading hand sewing needle to bury loose threads

**Free Motion quilt or hand stitch the Peaceful face**

Recommended Supplies for hand stitching the face.  
John James Cotton Darners Needles Size 1/5 - <https://amzn.to/3zgarub>  
Clover Embroidery Threader - <https://amzn.to/3zsVjJU>  
Hand embroidery threads:  
Wonderfil Rayon Razzle embroidery thread  
Black perle cotton thread for face  
Perle cotton thread colors for flowers and head wrap

**Living Water Quilter Amazon Shop**

A curated supply list, Peaceful Portrait, is in the Living Water Quilter Amazon shop.  
As an Amazon Associate I earn a small commission from qualifying purchases.  
<https://amzn.to/4d2qERT>

[Click here to download the workshop supply list and class preparations.](#)

Geraldine Wilkins, Living Water Quilter Contact the instructor at [dena@livingwaterquilter.com](mailto:dena@livingwaterquilter.com)

**Sewing Machine Required**